



Restricted Access to Ulkatcho First Nation

Road Closures and Restrictions

Effective: Friday May 8, 2020

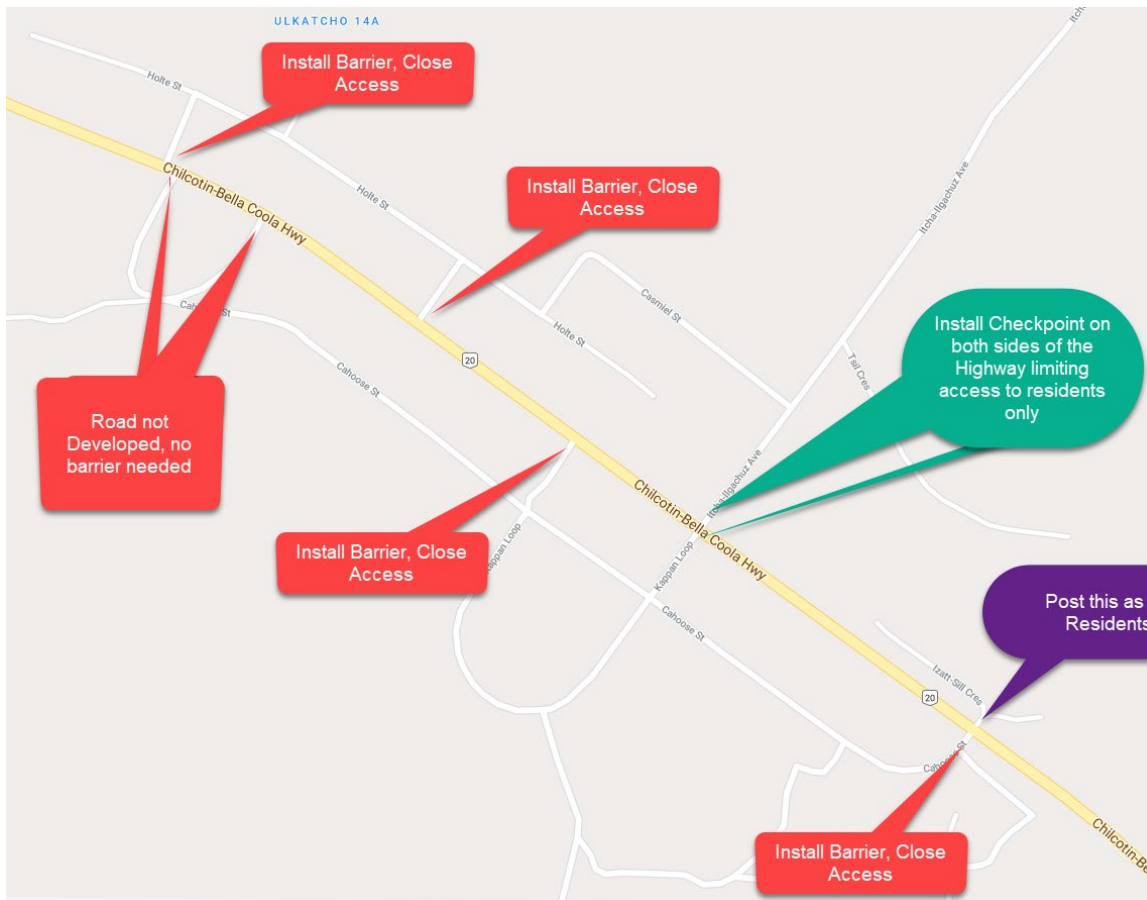
To provide a higher level of safety to our members and to restrict entry to our communities it has been deemed necessary to limit and monitor access to our communities. This will cause an inconvenience for many people and your assistance and help is greatly appreciated.

- Entrances to some roads will be closed (please maps below), there may be some changes.
- Entrances to some roads will be signed indicating "Residents Only".
- Signs will be posted in areas not shown on the maps.
- Restricted access points will be monitored to ensure compliance.
- Vehicle permits will be issued for Ulkatcho and Anahim Lake residents requiring access.
- **ACCESS TO THE CLINIC IS NOT RESTRICTED**, pick up a vehicle permit at the checkpoint
- **Essential Service deliveries can enter the community (food, fuel and other services)**

To assist in limiting unwanted individuals in the community, you need to direct visitors to follow the guidelines.

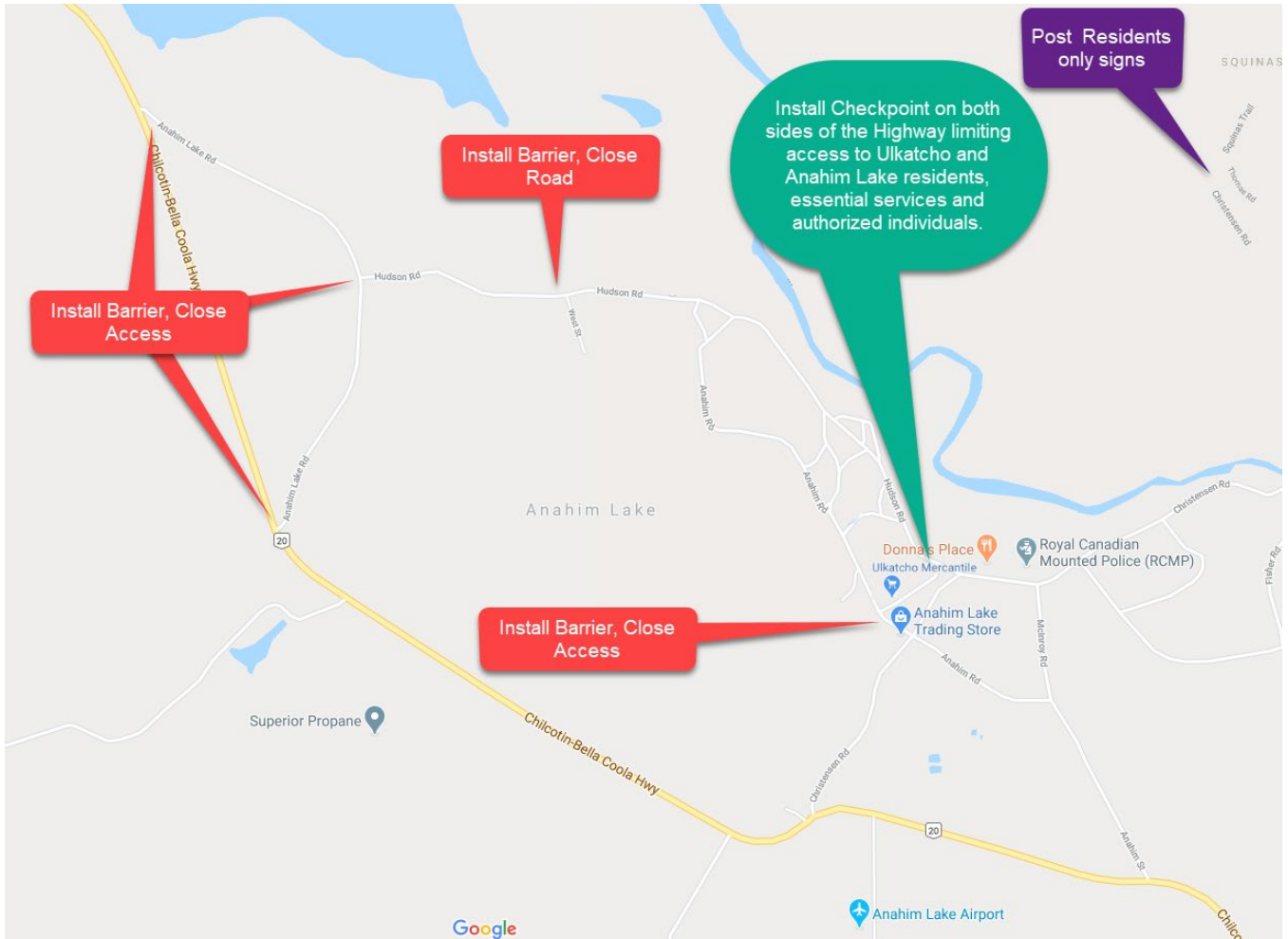
- **Do not invite people to the community**
- **Limit your travel to essential needs**
- **Do not remove roadblock barriers**

2 Mile





Main Reserve



Check Points: will be routinely monitored and patrolled during the day.

Vehicle Permits:

- Will be delivered to residences, if the driver of the vehicle is not home, the driver will be required to pick up a permit at a checkpoint.
- Available for pick-up at the checkpoints (Main Reserve and Two Mile).
- You will need to provide identification showing you are a resident of the area.

Visiting other communities:

- We have been asked by our neighbouring communities, to advise our members, to not travel into their communities.

Stay Home - Stay Safe